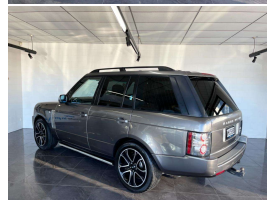


# 2010 Land Rover Range Rover Vogue TDV8



## VEHICLE INFORMATION

### Cash Price

Includes GST,  
Registration &  
Licensing

**\$49,990**

Finance this vehicle  
from only

**\$392.68**

per week\*

Total Amount Payable

**\$61,258.45**

finance  
**NOW**

finance  
**NOW**

Gain peace of mind  
with Mechanical  
Breakdown Insurance.  
Ask us how.

### Body

Station Wagon

### Odometer

118,020 km

### Engine

3628 cc

### Fuel Type

Diesel

### Transmission

Auto

### Wheels

-

### VIN

SALLMAM23AA318170

### Reg No.

NMU500

### Ext Colour

Grey

### History

Ex-Overseas, 5 owners

### Seats

5 seats

### Interior

Beige

### Audio

-

### Stock ID

4333

### Exterior Features

- » Air Suspension
- » Alloys
- » Fog Lights
- » Remote Locking

### Interior Features

- » Air Bag(s)
- » Air Conditioning
- » Bluetooth
- » Digital Dash
- » Digital Display
- » Electric Seats
- » Heated Seats
- » NZ Stereo
- » Push Button Start
- » Reverse Camera

### Mechanical Features

- » 4WD/4x4
- » Cruise Control
- » Electric Mirrors
- » Electric Windows
- » Immobiliser
- » Traction Control



The Trade In Post, Phone 021 606 642, Email [jordan@thetradeinpostchch.co.nz](mailto:jordan@thetradeinpostchch.co.nz)  
31 Moorhouse Avenue, Addington, Christchurch 8011, New Zealand  
[www.ttip.co.nz](http://www.ttip.co.nz)

\* Finance calculation based on a 36 month term, no deposit and with an example annual fixed interest rate of 12.95%. Actual interest rate may be higher or lower. Includes an establishment fee of \$495.00 and a monthly maintenance fee of \$1.80. Full term total amount payable of \$61,258.45. Estimate only, not an offer of finance. Terms, conditions and lending criteria apply.